

# SITE ANALYSIS

## Hvanneyri - Ramsar Area

### Tourism and Infrastructure

#### ATTRACTIONS IN BORGARBYGGÐ

This map show attraction around the Ramsar area. Borgarbyggð offers a variety of activities. After checking out the interesting places in Borgarbyggð, we see that there are many things available and a lot for the tourist to visit. We believe that Hvanneyri is an ideal place for bird watching and that many people would take advantage of the infrastructure we are going to offer.

#### DEVELOPMENT HISTORY OF THE BUILDING

**1896** Today, Skemman is used as the church's meeting house, but in recent years a café has been run there

**1901** The barn housed 16 cattle and 8 calves. There the students learned to milk. Today is the Hvanneyri's pub there

**1910** The building housed students' dormitories on the top two floors and classrooms on the first floor. Today there is accommodation for students at Landbúnaðarskólinn

**1920** The building housed the principal's apartment for a long time, along with the staff's apartments. Today, the building is used as an office

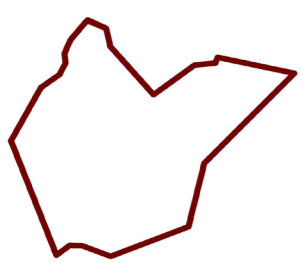
**1929** The barn housed about 80 animals. Today, the Agricultural Museum of Iceland is located there. Along with Ullarselið, which sells handicrafts

**1963** In the house the agricultural department started their operations and was it running until 1992. Today it's used for all practical teaching

#### SUGGESTIONS OF GOOD AREAS FOR THE PATH SYSTEM

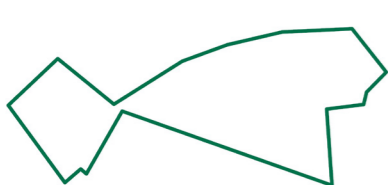
By selecting locations where birds can be viewed without causing disturbance, the natural heritage of the area can be enjoyed by people with no negative impact on the birds or their habitats. There are enough places for people to see the full range of birds and get close to nature without having a negative impact on the site. To protect habitats, paths should be related to the existing pattern of the landscape, following features such as existing tracks, field boundaries and ditches.

##### PATH 1



This walk would follow existing tracks and paths. Therefore this path should not increase the disturbance to birdlife. This is about 5 km long walk.

##### PATH 2

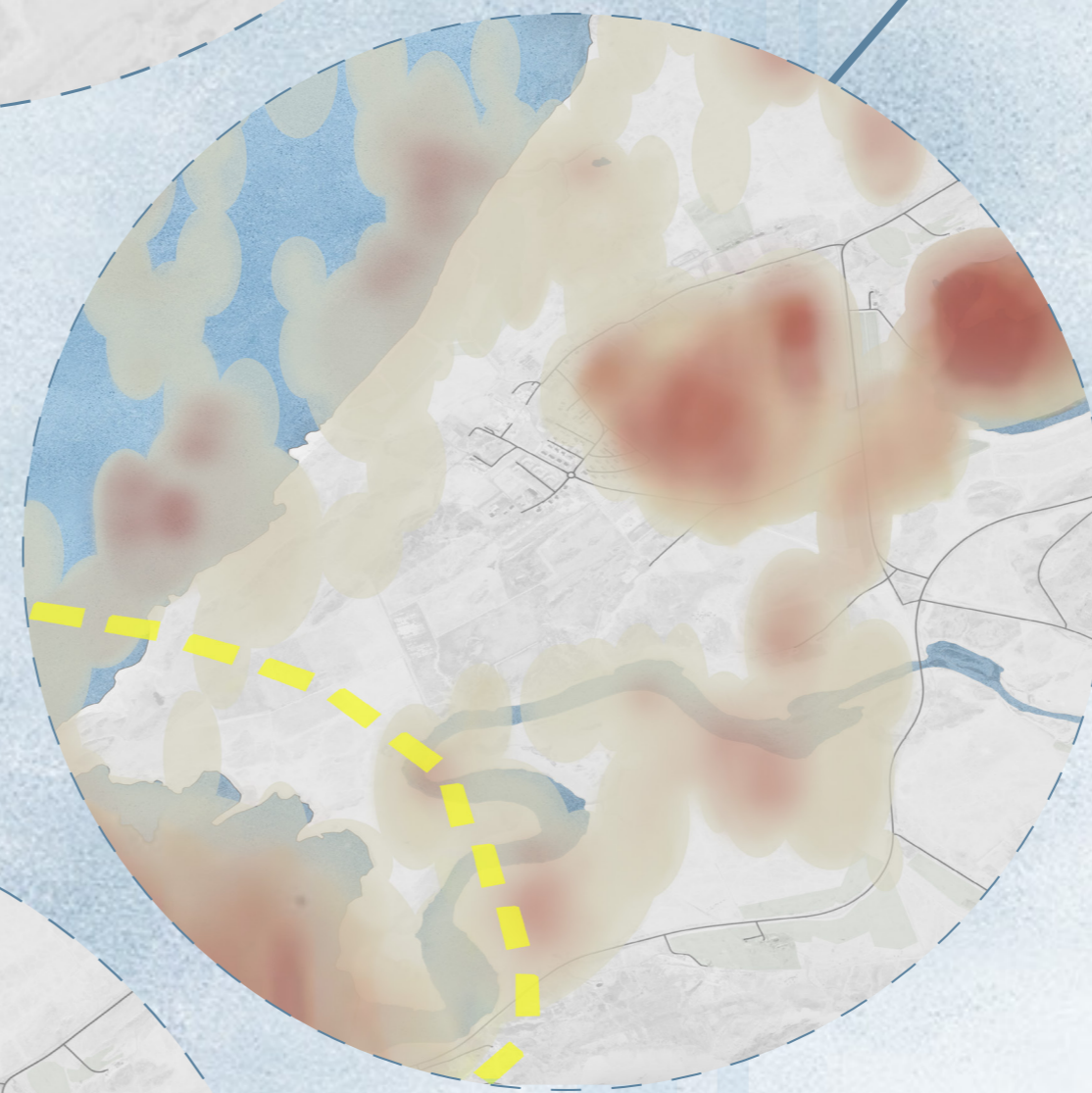


This walk will be following the field boundaries and ditches. The birds are used to some disturbance so the path should not make a big difference. This is about 3.5 km long walk.

##### PATH 3



The birds using these areas are used to the comings and goings of people, so they would not be adversely affected, provided people kept to the paths. This is about 4.5 km long walk.



#### ACTIVITIES

Grábrök a volcanic crater east of Lake Hreðavatn

Paradísarlaut

The Troll Garden at Fossatún

Krauma Geothermal Baths

The Hreppslaug Swimming Pool

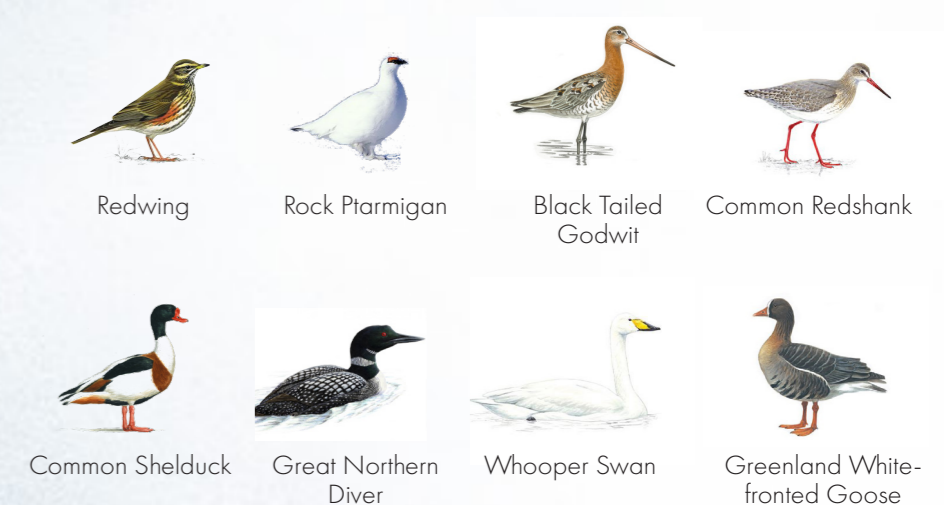
#### POTENTIAL HOUSING FOR USE

In the center of the village there are many potentials for indoor spaces that could be used for future travelers. These houses have great history and could easily be converted in use for coming tourist.

#### BIRD DENSITY

Darker colors represent higher densities of birds. There is a very large number of birds by Vatnshamravatn and in the fields by Hvanneyri. As well there are lot of birds in Kistufjörður. The yellow dotted line shows a sensitive area where there should not be additional visitors because of the fragile habitats.

#### COMMON SPECIES IN THE AREA



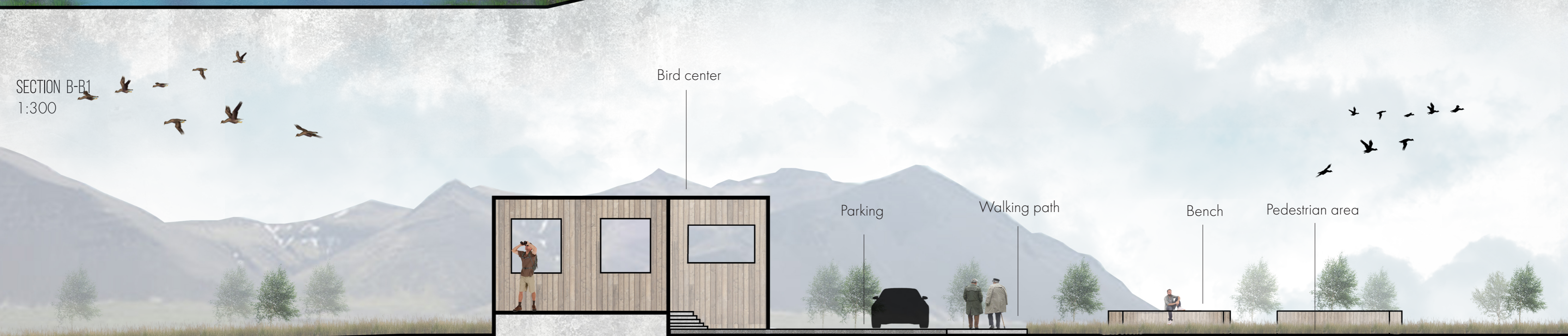
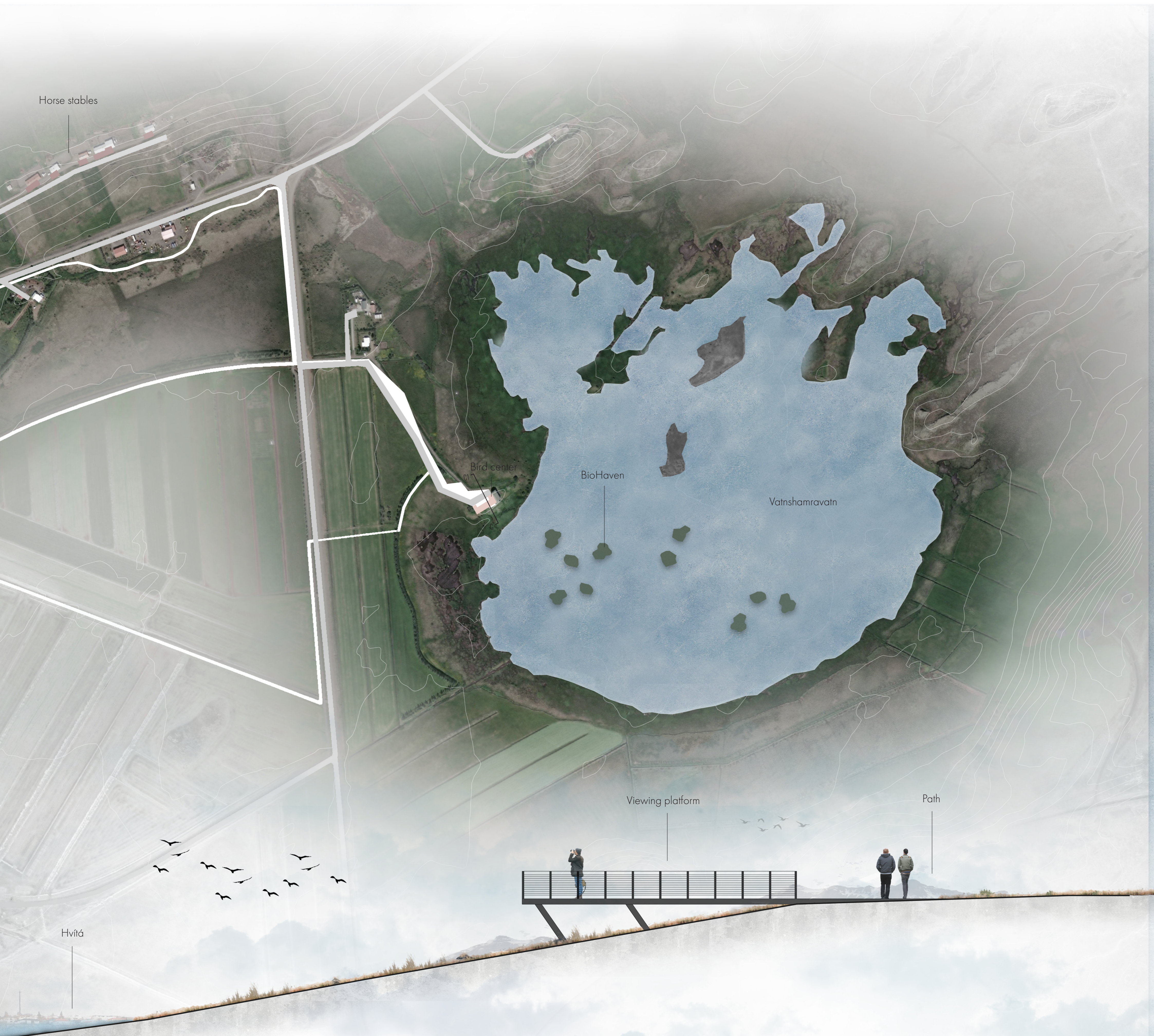
#### SUGGESTIONS OF GOOD AREAS FOR BIRD HIDES

# MASTERPLAN

## Hvanneyri - Ramsar Area

### Tourism and Infrastructure





# DETAIL PLAN

## Hvanneyri - Ramsar Area

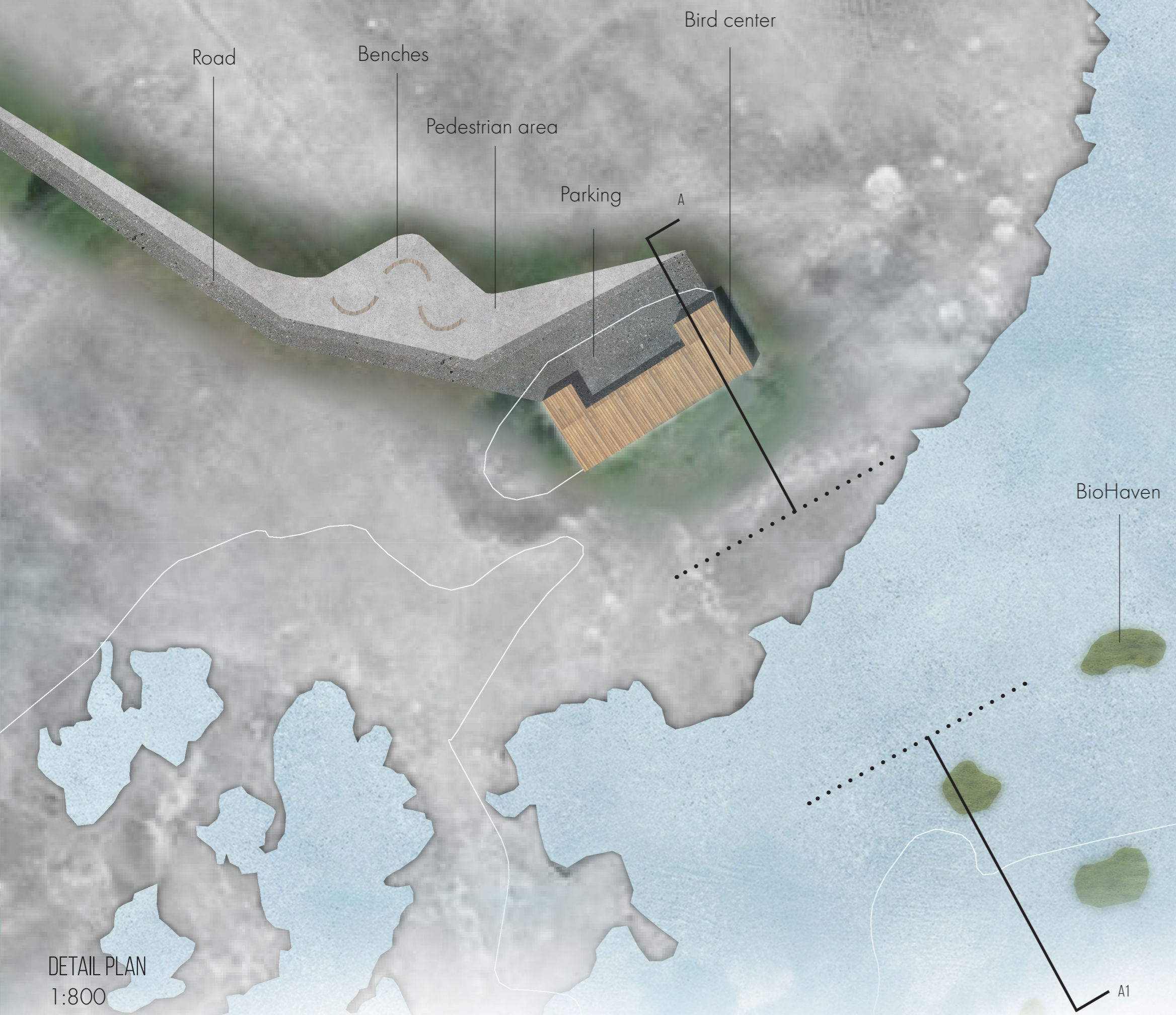
### Tourism and Infrastructure



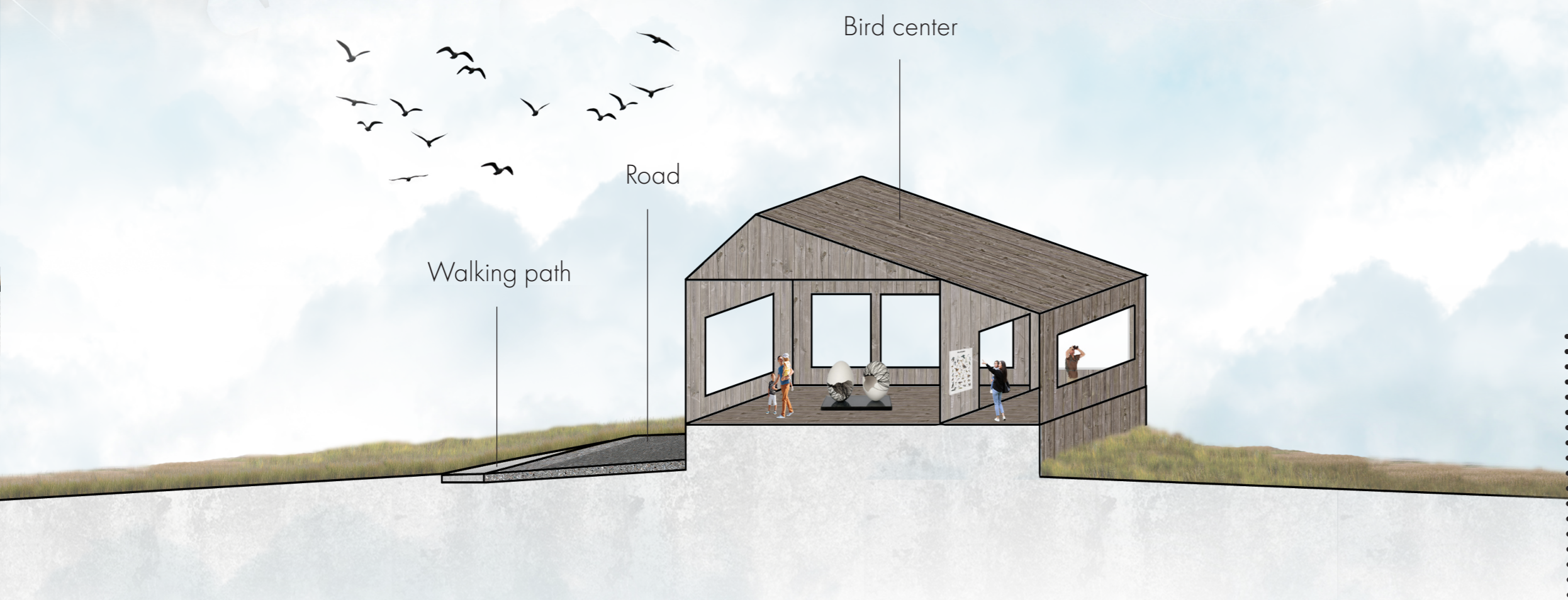
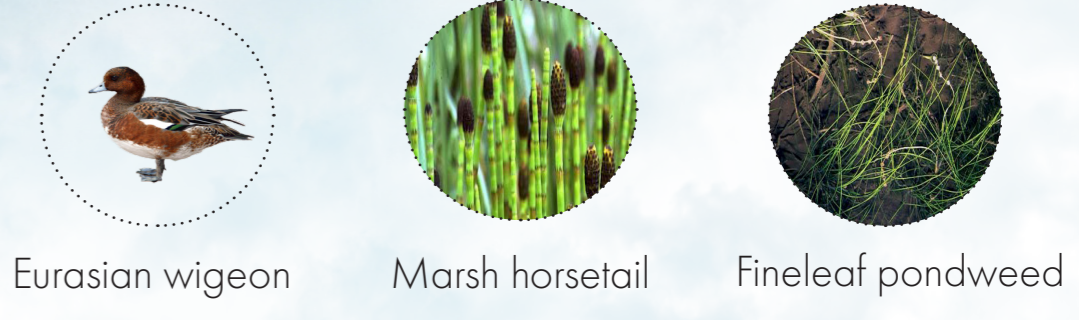
# DETAIL PLAN

## Hvanneyri - Ramsar Area

### Tourism and Infrastructure



DETAIL PLAN  
1:800



SECTION A-A1  
1:400

