



1 Analysis - weather and geology

Wind

In general, the wind is **not so strong**. However, when it is **strongest**, it is the time **between May and September**. It is mainly coming **from the ground**. The last information is that **erosion** due to the **wind** and the **number of trees** or vegetation is **related**. So, to **prevent** erosion, we want to put some **trees, stonewalls** and some **feature walls**.

Tide

The tide can go far away from the beach but **not too far** in the ground. So, we can deduce that this is **not too much a trouble** for us. Moreover, Gufunes is also in a **safe zone** with the **waves**. But we must think about putting a **dyke** due to the **ocean level rising**, which will come in twenty or more years. Maybe think about a usable path during low tide.

Geology and Materials

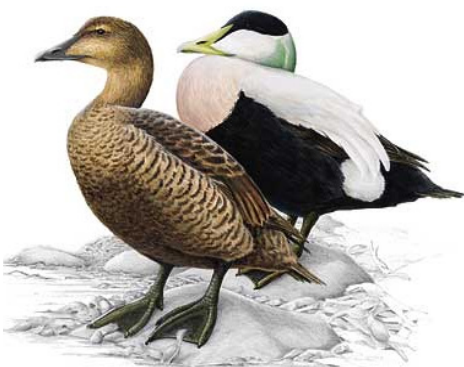
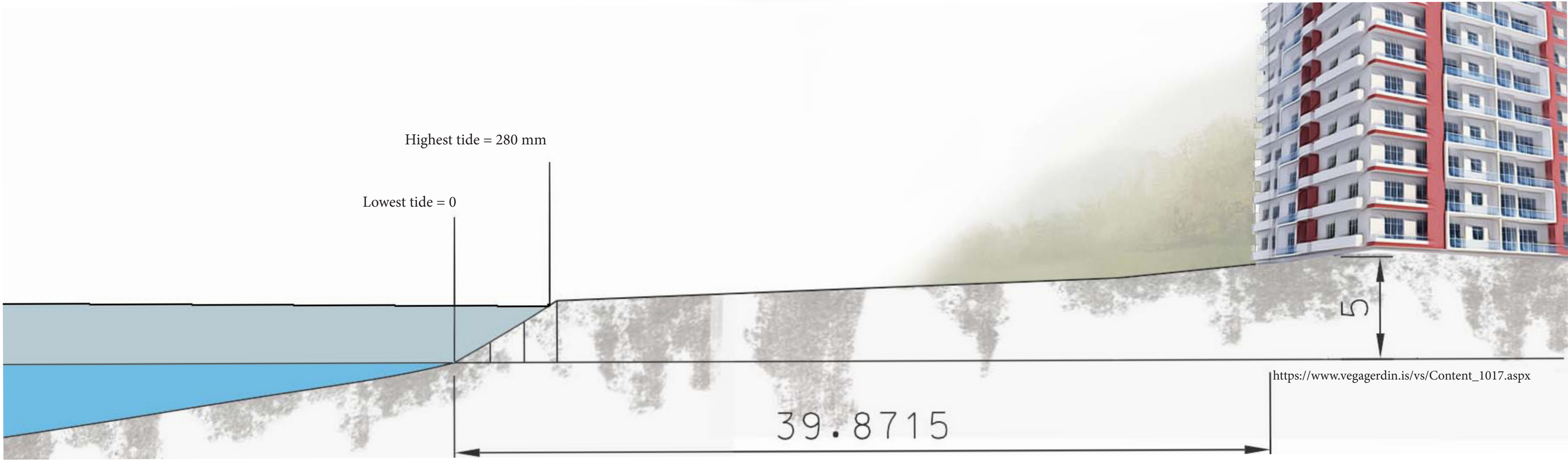
We have some **cliffs** and **beaches**. The geology is not natural in every part of Gufunes. The white beach is manmade and there are lots of **sea defences**. Therefore, we will focus on **constructions** more on the **manmade areas** and **preserve and highlight the natural ones**.

The strongest wind direction (SE-SSE) The sun circle, in summer time

The highest wave height is in this situation during high-current floods.

Air pressure: 20 - 40 cm
Due to the wind load: 20 - 40 cm.
Base fracture: 50 - 200 cm.
Equals highest = 280 cm
Equals lowest = 90 cm

Average tidal range is about 2.1m



Common eider



Fulmarus glacialis



Birds and vegetation

About 39 species.
Most of æðarfugl
and fýll

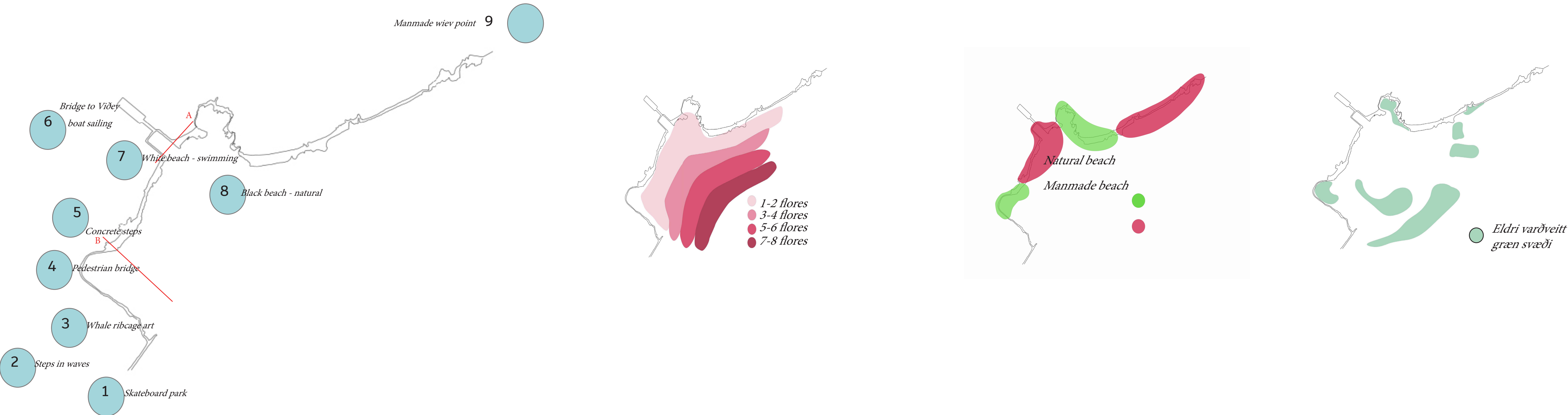
They use the area mostly
for **food supply**
Rough grass.

Húsapuntur (*Elymus repens*)
Vallarfoxgras (*Phleum pratense*)

Common plant species are in the beach



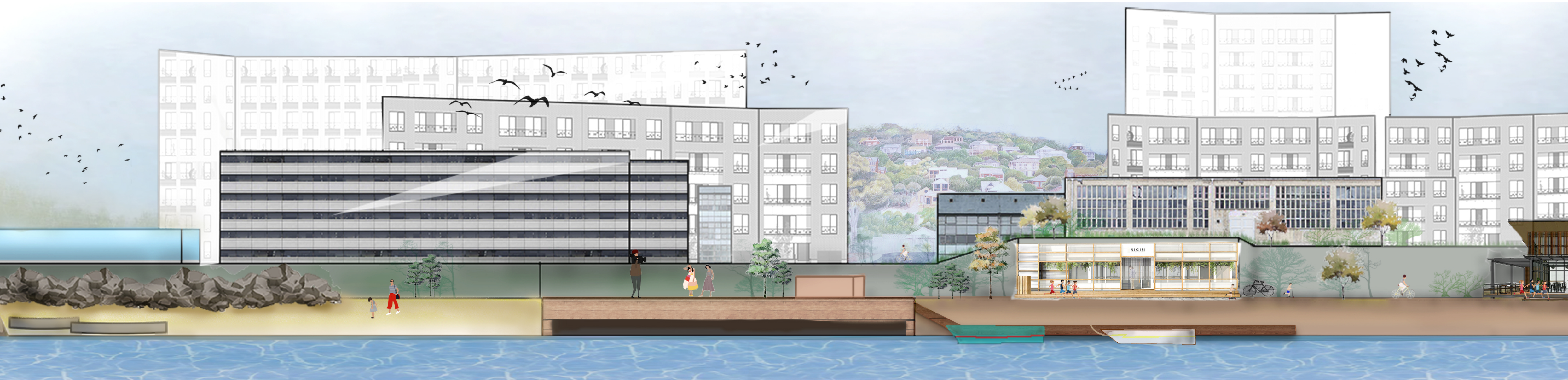
Gufunes



Section A Scale 1:500



Section B Scale 1:200



4 Detail Plan - The white beach

Ellisif M Bjarnad.

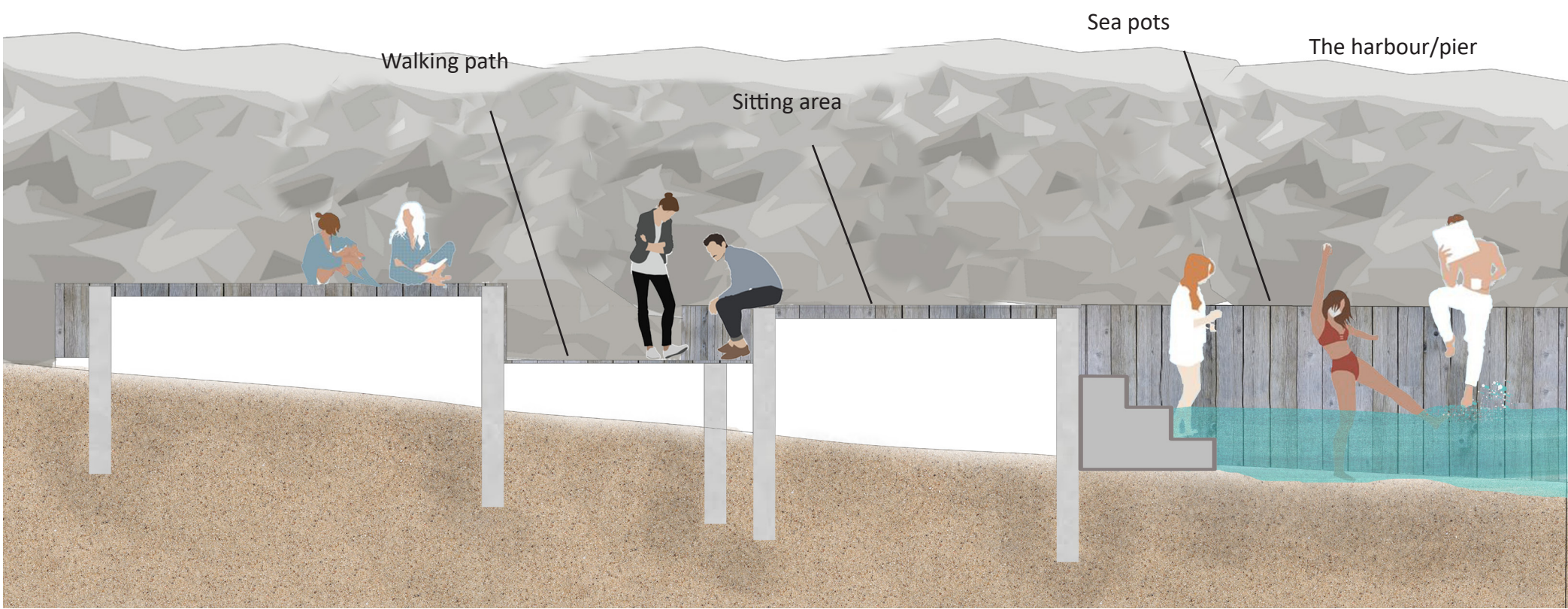
Detail Plan 1:500



The white beach. The kajak rent is near by and small huts are available for people to hide away and change into swimsuit and go bathing. Waking path which comes from the cliff, gives you the greatest view on your hike. The path goes on to the white beach and to a curvy walking path with timber. There we have easy access to the pots of seawater, and can stop by and enjoy the sun, the smell of the ocean or just watch the waves of the sea.

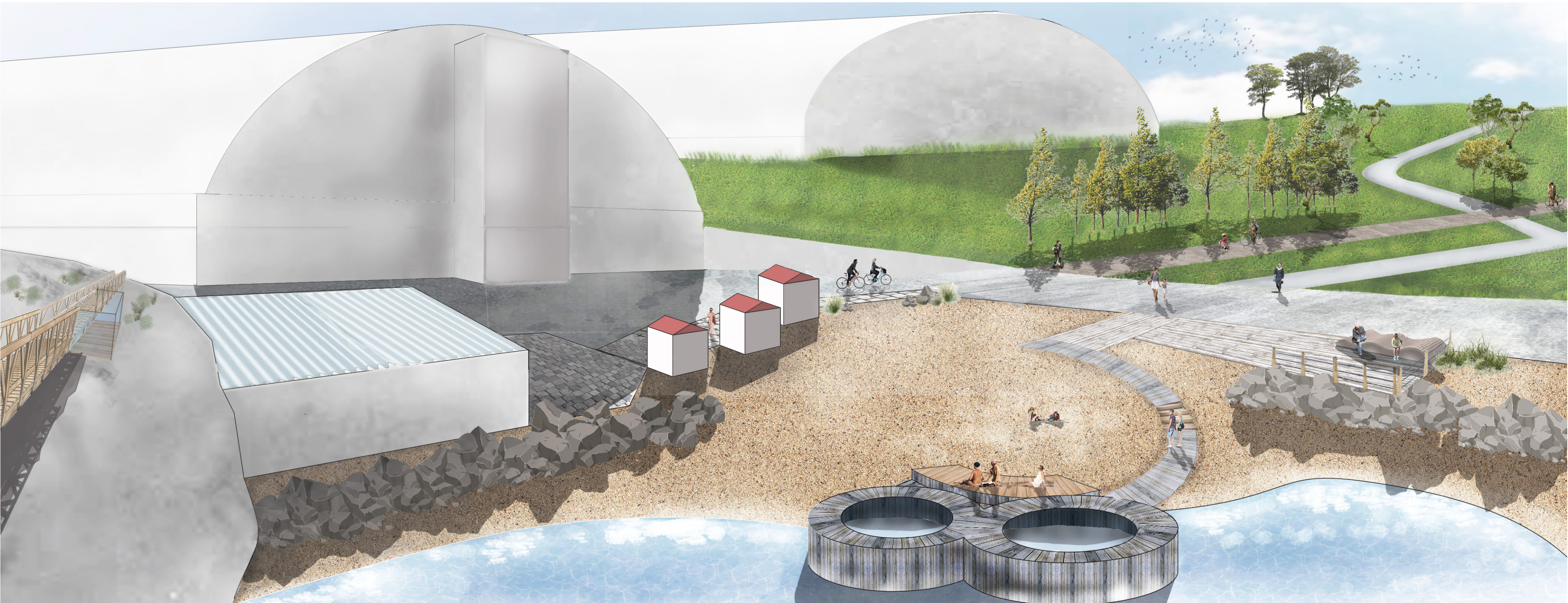
*The white beach.
Thought as a big playground
for
people in all ages. Walking
path and a bicycle road goes
just by and this is the place
where you can cool down in
sea water. Easy access in low
tides.*

Section line C 1:50



The pots are holding a certain height of water, approximately 80 100 cm. They get filled up when the tide is high and leave water in the pots when there is low tide. A good access to them is a walking path with timber from the boathouse. Close to the pots are platforms to lye on or to sit on. Gives people opportunity to relax and stay and enjoy being close to the see.

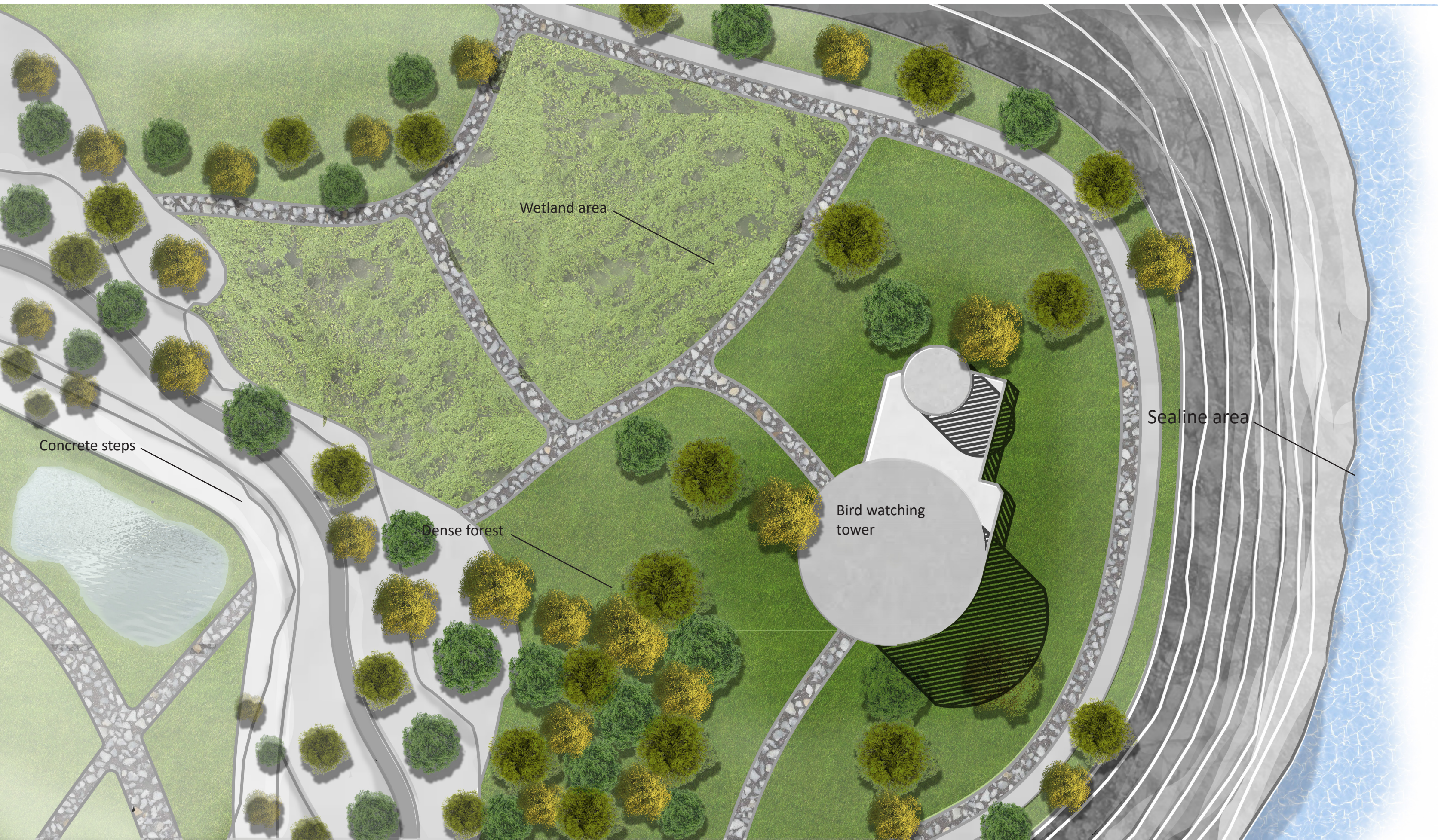
Perspective 1:200



5 Detail Plan - Bird watching area

Jules Hauer

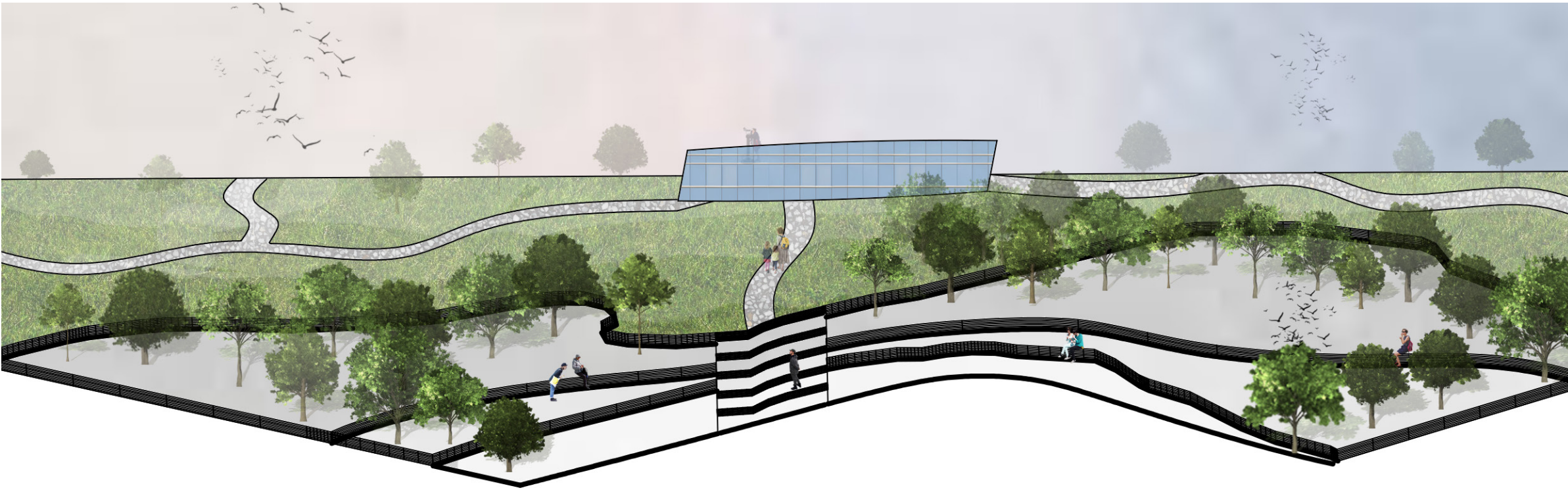
Detail Plan 1:200



Concrete steps. An artwork in the natural environment, which appears when you walk by the beach on the path. A place to sit or walk on. The steps follow the morphology lines in nature.
A house with windows to observe the bird life and access to the roof for better view.
A tower with a view over the sea, Reykavík, closest neighborhood and Viðey.
From the tower there is a three view points to different bird habits.

- Open view over the wetland
- Dense wood area for smaller bird species
- View over the sealine and the birds by the sea

Perspective 1:300



Section line D 1:200

